

Connecting your Chromebook to Wi-Fi

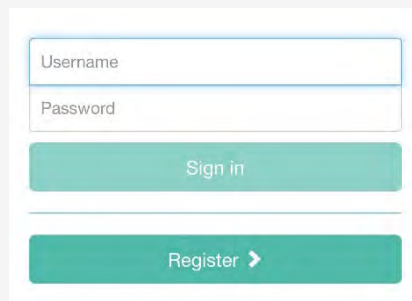
1

Welcome to Wrexham University.

On your device, click on the network settings in the bottom right-hand side of the task bar.

Click on the network “GU Guest”

Once connected, it will either prompt or open a new sign-in page.



Username

Password

Sign in

Register >

Register by entering your mobile number or e-mail address.

You will be sent a notification to verify.



Note: If you have previously connected to eduroam, please “Forget” these networks first.

Connecting your Chromebook to Wi-Fi

2

You will now need to download the eduroam certificate for your device.

Open google chrome and search for the page cat.eduroam.org

Select “Click here to download your eduroam installer”

Organisation
Select your organisation

Glyndwr University
United Kingdom

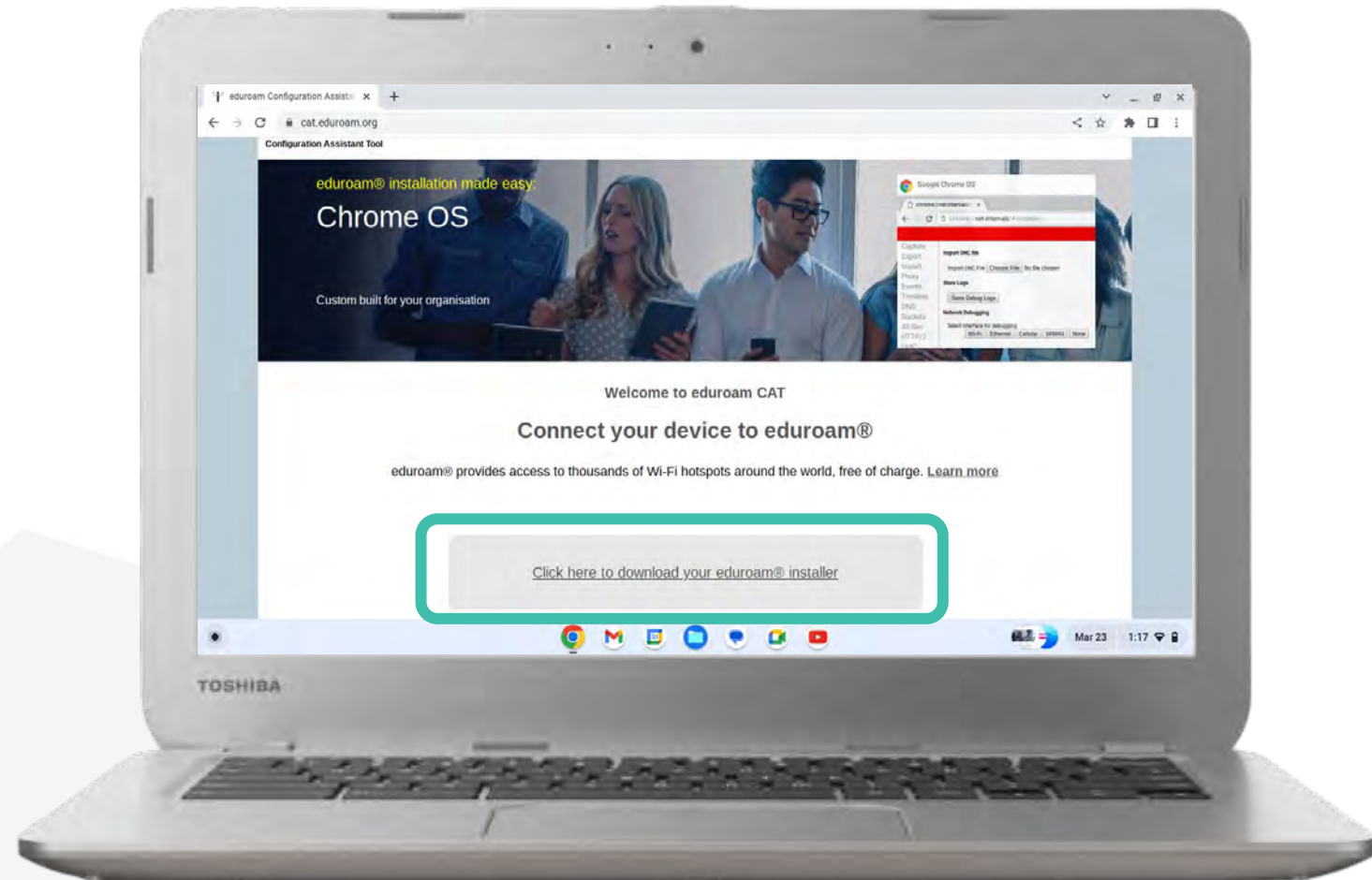
Glyndwr

Help, my organisation is not on the list.

Locate me more accurately using HTML5 Geo-Location

Show organisations in United Kingdom show all countries

Type “Glyndwr” to find the profile, click on it to continue.

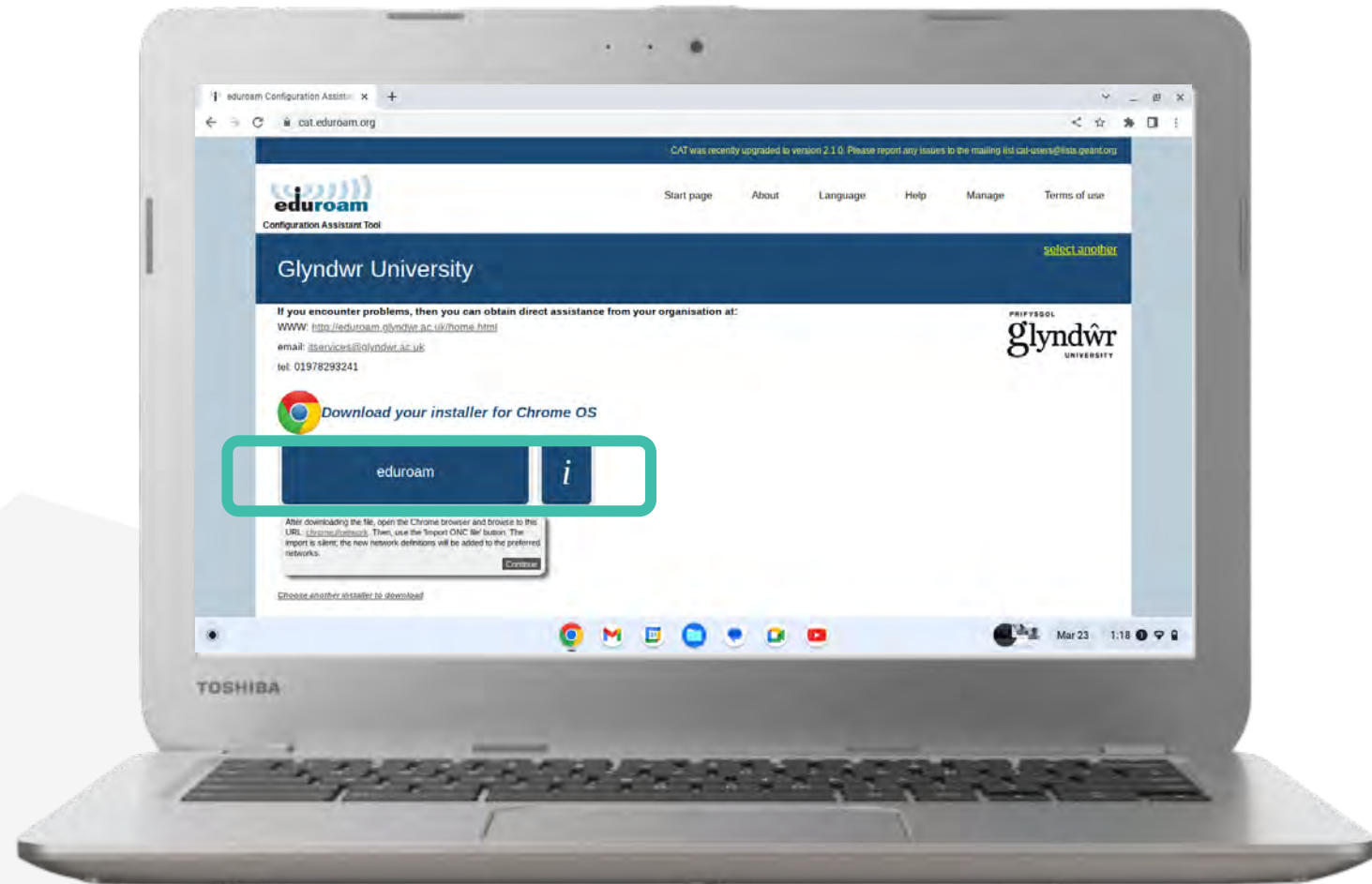


Connecting your Chromebook to Wi-Fi

3

Once you have selected the Glyndwr profile, download the eduroam installer.

The installer will take a few seconds to download, it will install in the background.



Connecting your Chromebook to Wi-Fi

4

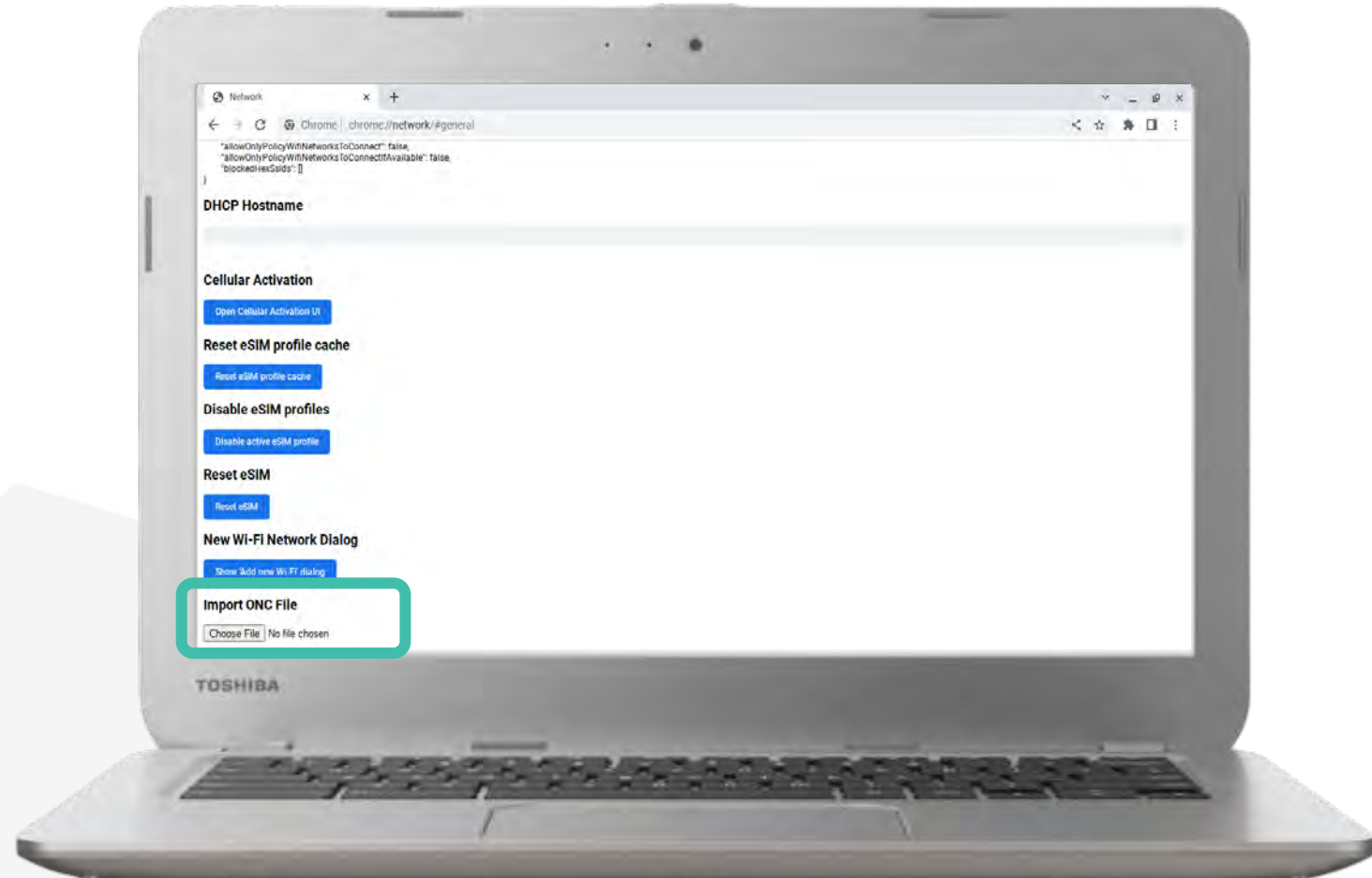
Open your Google web browser and type in:

[Chrome://net-internals/#chromeos](chrome://net-internals/#chromeos)

Select the Chrome OS option on the right hand column.

Scroll down to the bottom of the webpage and find “Import ONC File”.

Click on “Choose file” and select the Eduroam Installer (Glyndwr-eduroam) from your downloads folder.



Connecting your Chromebook to Wi-Fi

5

Once you have installed the certificate, click on the eduroam network again on the bottom right-hand side of the task bar.

A new menu will appear, scroll down to the selection Identify and password.

Enter your student ID followed by @mail.glyndwr.ac.uk in the identify field and your password.

Note: Make sure you forget GU Guest when connected to Eduroam

